

# WI PYRAMID MODEL FOR SOCIAL AND EMOTIONAL COMPETENCE

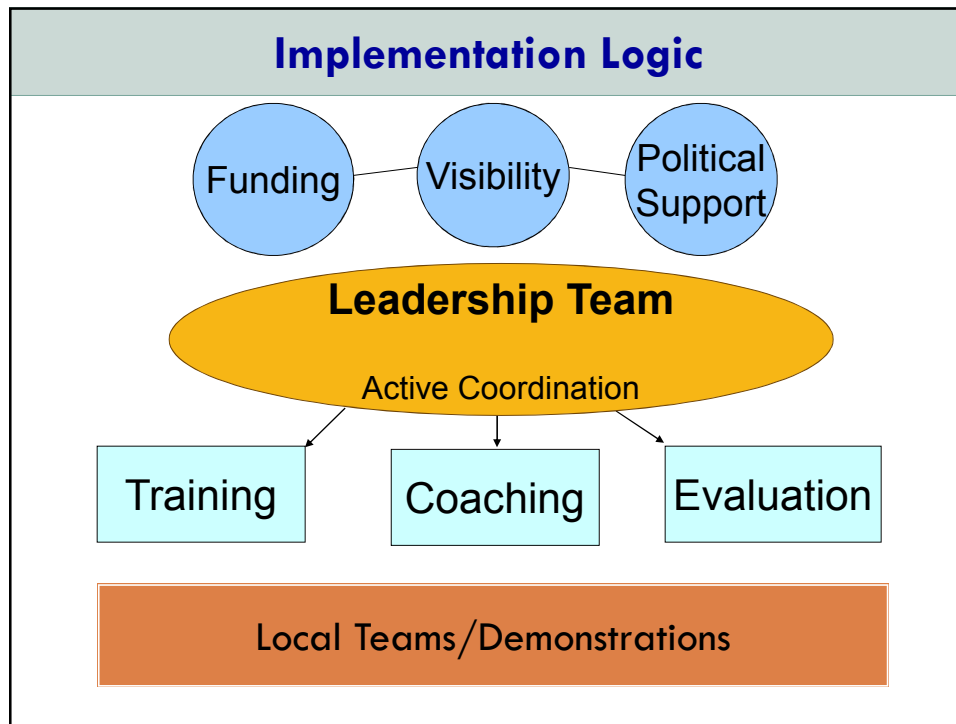
## STATE LEADERSHIP TEAM MEETING



October 22nd, 2012

### Today:

- Introductions/Greetings
- Notes from the field- updates from the coordinators
- Workgroup updates
- State team members updates
- Benchmarks of Quality Assessment
- Setting priorities and determining next steps
- Staying connected



## Updates:

- Pyramid Model Implementation Academy 2012
  - TPOT reliability & coaching support sessions
  - Team implementation meeting
  - 6 new teams:
    - Early Learning Center, Sheboygan
    - School District of Reedsburg, Reedsburg
    - Racine Unified School District, Racine
    - UW Oshkosh Head Start, Appleton
    - Mountain View Montessori, Wausau
    - Next Door Foundation/Educare, Milwaukee



## Updates

- Booster session – October 4<sup>th</sup>, 2012
- Funding:
  - ▣ Investing Early grants
  - ▣ Race to the top & Pyramid Model
- Political Support:
  - ▣ Meeting with Secretary Anderson, Judy Norman-Nunnery and her staff on 10/31<sup>st</sup>
  - ▣ Pyramid Model roundtable discussion 11/19<sup>th</sup>

## Visibility

- <http://www.facebook.com/WiPyramidModel?ref=h>



- Total Likes **76**
- Friends of Fans **19,741**
- Weekly Total Reach **129 (last week)**

**Link to our facebook page from the Collaborating Partners Pyramid Model page:**

- <http://www.collaboratingpartners.com/social-emotional-competence-sefel-pyramid.php>

## Pyramid Model and Parent Involvement

- PIWI at the St. Aemillian-Lakeside, Milwaukee
- Community example:
  - Wausau's Tucker Turtle Family Night was attended by about **900** parents!



**Julie received an Outstanding Service  
Award! Yay!!!!**



*National Training Institute on Effective Practices*

**Addressing  
Challenging  
Behavior**

*Supporting Young Children's  
Social/Emotional Development*

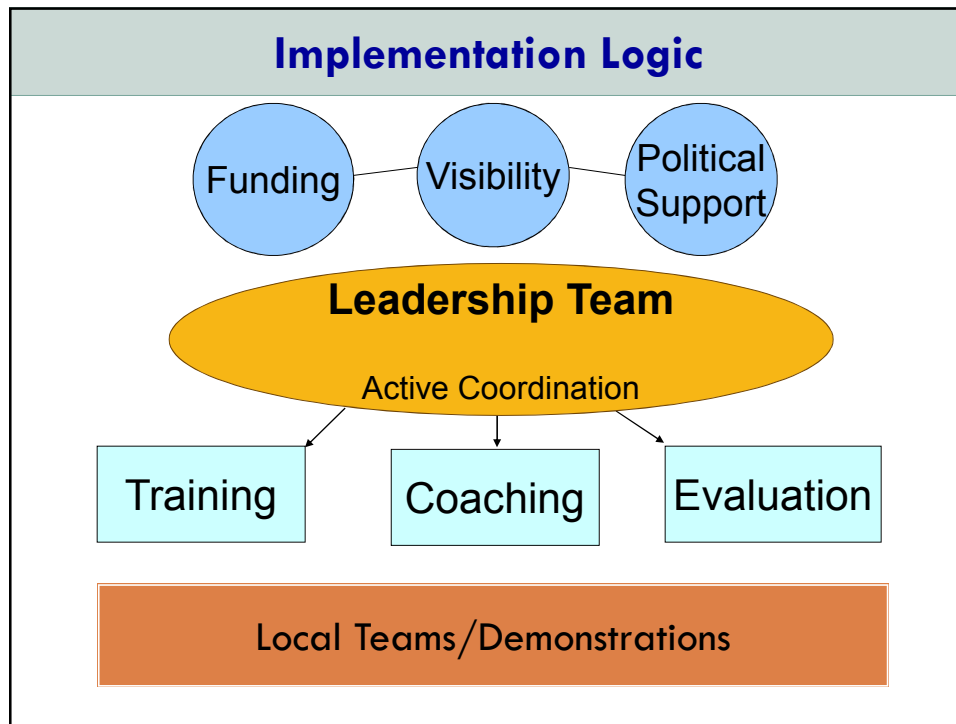
Save the Date:  
**March 20-23, 2013**

Sheraton Sand Key, Clearwater, Florida

Sponsored by:

USF  
[Logo]  
[Logo]

For more information visit:  
[www.AddressingChallengingBehavior.org](http://www.AddressingChallengingBehavior.org)



## Program-wide implementation sites in Wisconsin

### 2010 Cohort:

- ▣ Woodson YMCA, Wausau
- ▣ AC Kiefer Educational Center, Wausau
- ▣ Kids USA Learning Center, Chippewa Falls
- ▣ CESA 11 Head Start, Chippewa Falls
- ▣ A Child's Place Child Care Center, Kenosha
- ▣ ThedaCare Child Learning Center, Appleton

### 2011 Cohort:

- ▣ Dane County Parent Council, Inc., Madison
- ▣ CAP services, Inc., Stevens Point
- ▣ YWCA Child Development center, Wausau
- ▣ Menomonee Falls Early Learning Center, Menomonee Falls
- ▣ School District of Waukesha, Waukesha

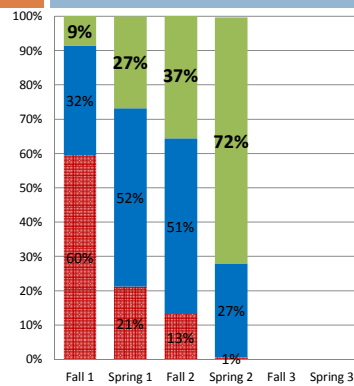
### 2012 Cohort:

- **Early Learning Center, Sheboygan**
- **School District of Reedsburg, Reedsburg**
- **Racine Unified School District, Racine**
- **UW Oshkosh Head Start, Appleton**
- **Mountain View Montessori, Wausau**
- **Next Door Foundation/Educare, Milwaukee**

## Our Program Wide implementing sites

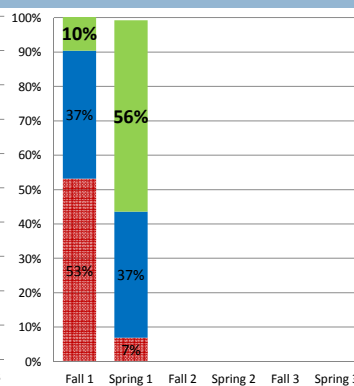


**Percentage of Items in Place  
 Cohort 1- demo sites  
 2010**



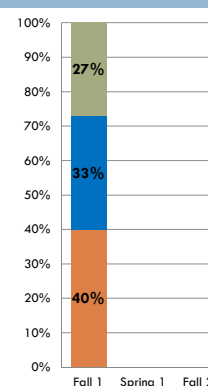
■ in place  
 ■ Partially in place  
 ■ Not in place

**Percentage of Items in Place  
 Cohort 2- 2011**



■ In Place  
 ■ Partially in Place  
 ■ Not in Place

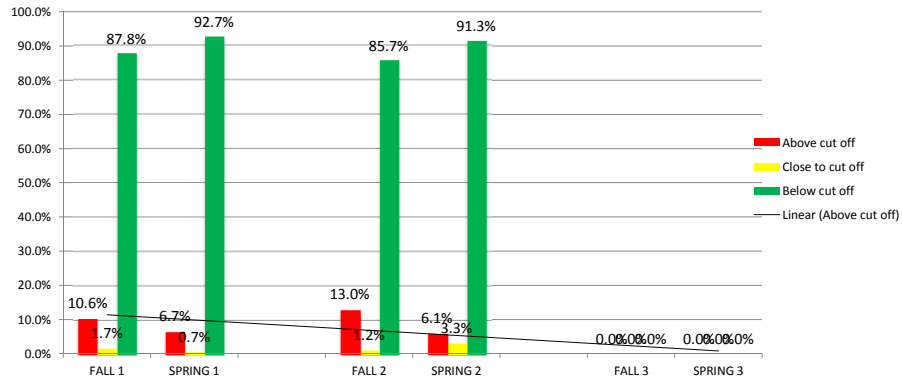
**Percentage of Items in Place  
 Cohort 3- 2012**



■ in place  
 ■ Partially in place  
 ■ Not in place

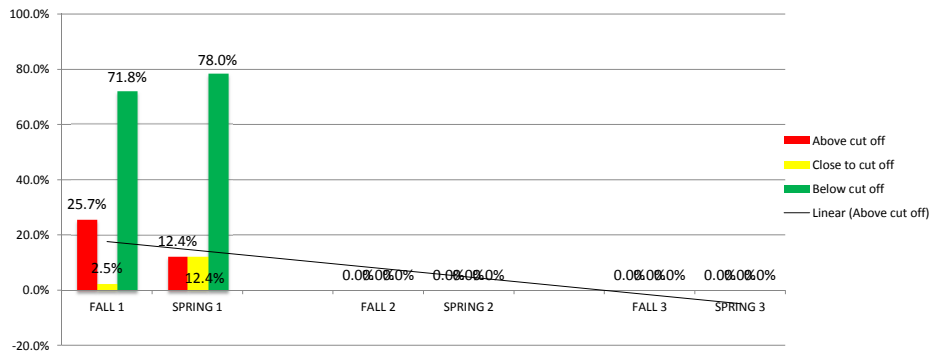
## Child-level data: Cohort 1

Fall and Spring ASQ:SE score percentages  
 Cohort 1



## Child-level data: Cohort 2

Fall and Spring ASQ:SE score percentages  
 Cohort 2





## Workgroups Updates

- Data- Julie/Lana
- Training Support – Julie
- Infrastructure – Lilly

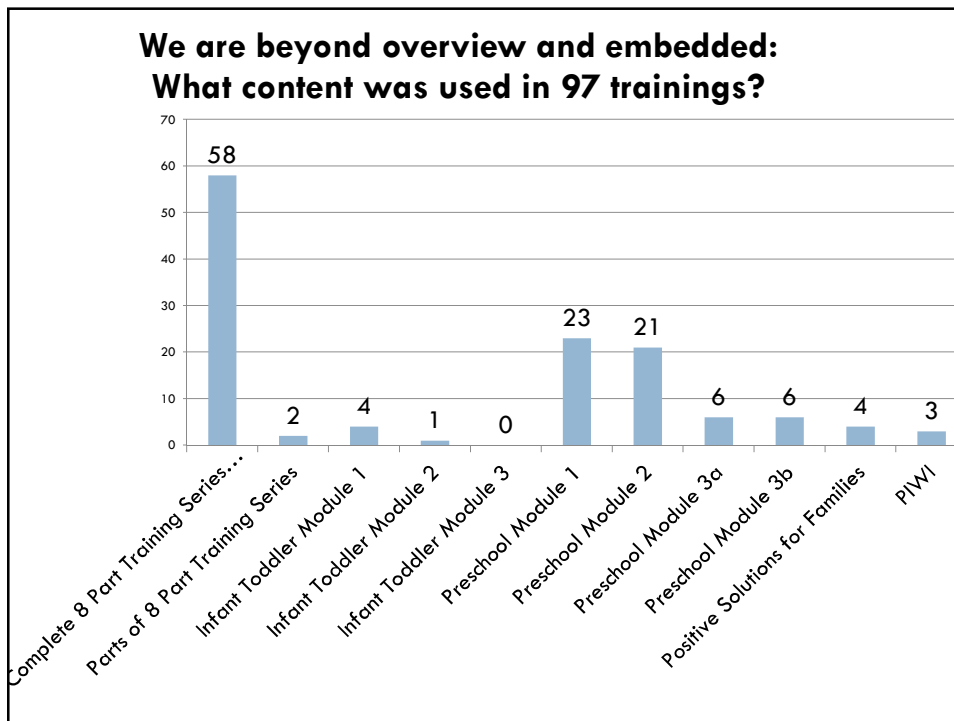
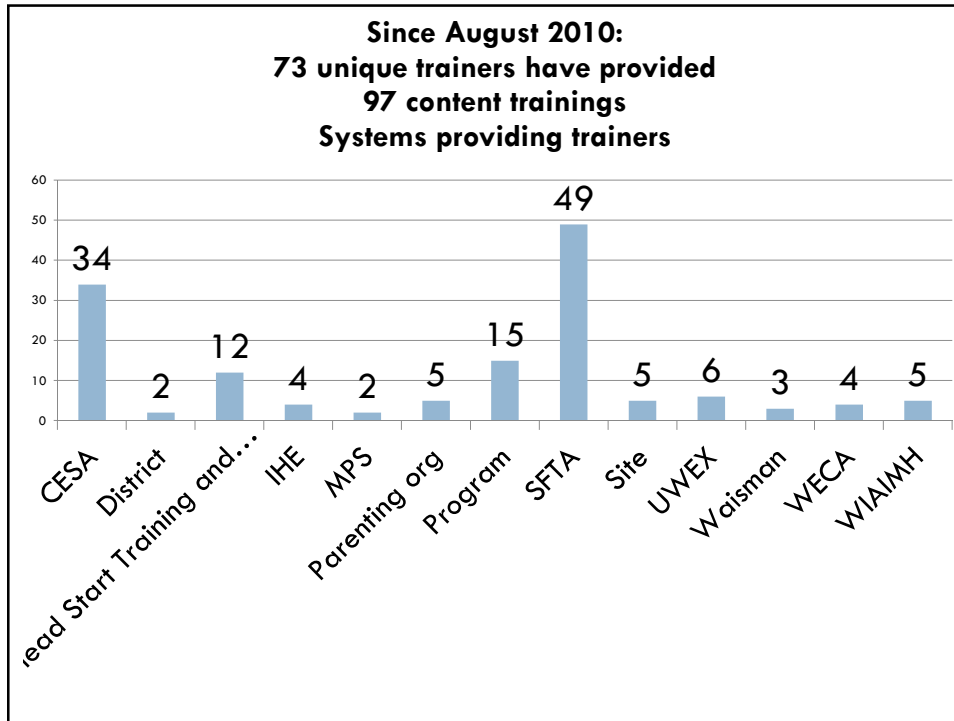
DATA WORKGROUP  
UPDATE

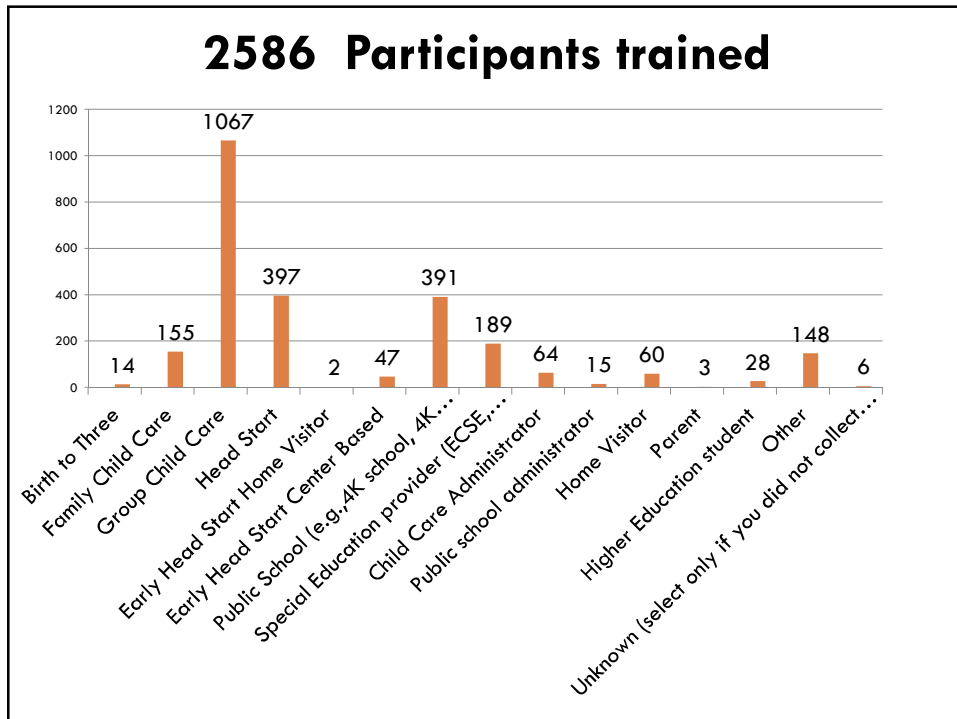
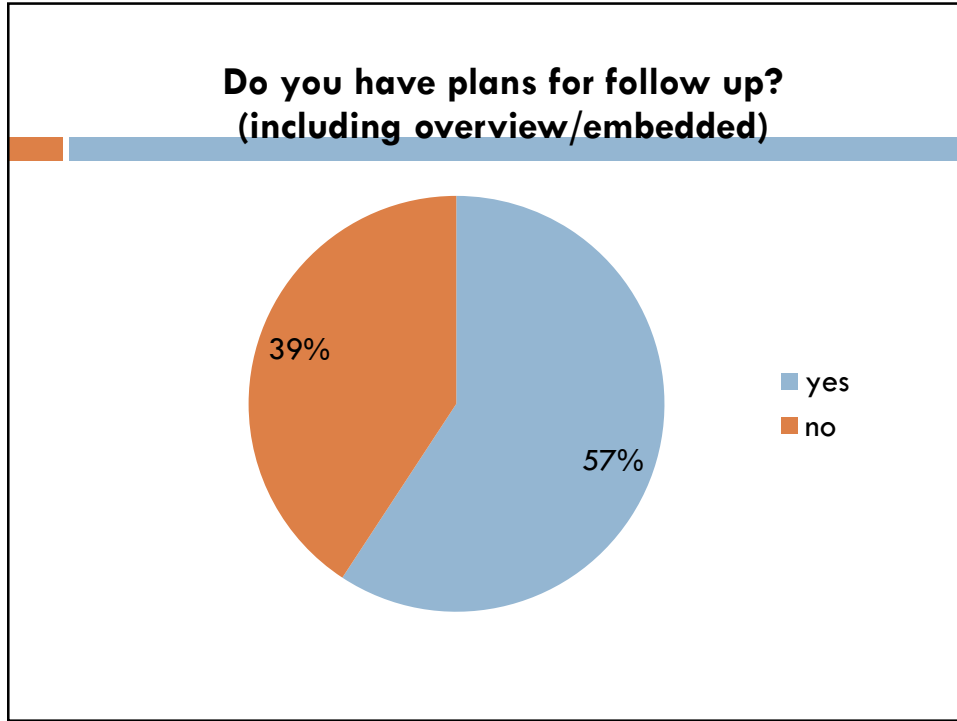
## Show me the...DATA

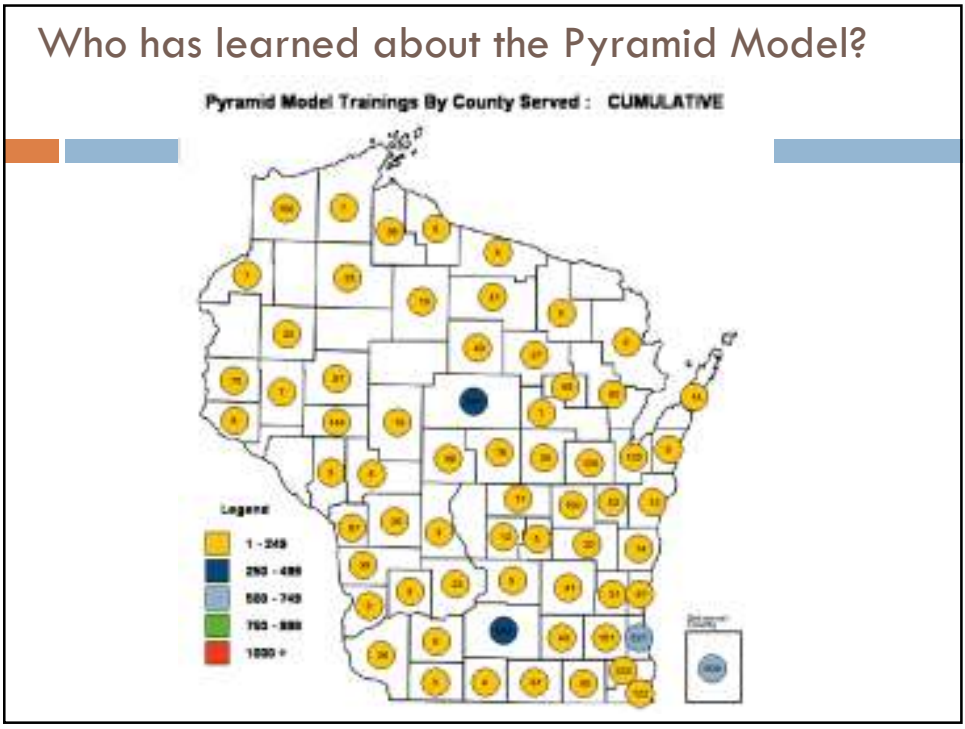
- Web based data submission & reporting system
  - Initial focus on the program-level data:
  - <http://test.intsoft.spb.ru/WIPM/Admin>

## OCTOBER 2012 PYRAMID MODEL TRAINING REPORT

Compilation of training data  
August 2010 to Oct. 3, 2012









<ul style="list-style-type: none"> <li>• Barb Evensen</li> <li>• Kath McGurk</li> <li>• Julie Walter</li> </ul>	<ul style="list-style-type: none"> <li>• Staci Sontoski</li> <li>• Linda Tuchman</li> </ul>
---	---

## SUSTAINABILITY/INFRASTRUCTURE UPDATE

August-October 2012

## Infrastructure Team Meeting

### Infrastructure Work Group Meeting Sept. 20, 2012

- Develop and Sustain a Functional Master Cadre
  - Launch Academy with 5 new teams in August
  - External coaches are better primed b/c of lessons learned with earlier "pioneers"
  - Implementation training now more focused on successful implementation
- Build Regional Capacity to Support PM efforts Across Sectors
  - DPI funding PSTs as external coaches
  - Efforts at the SE COP level to support PM efforts as well as in Western region
- Build Political Will for PM Efforts
  - Kath provided a 2 hour briefing to Secretary Anderson
  - The Pyramid model was mentioned in the JFC meeting about YoungStar
  - Lana and Julie were asked to brief Div. Admin. Judy Norman-Nunnery
  - October 31 Lana and Julie will brief Secretary Anderson about the PM
  - Julie B. studying school to prison pipeline and role of Social Emotional supports
  - Using Sept. 20<sup>th</sup> input Lilly updated PM three year budget and staffing plan for statewide implementation of the Pyramid Model for report being created by Sinnika Santala for Secretary Anderson also shared expulsion study report. Lilly met with Sinnika October 15<sup>th</sup> and advised her that the budget was updated
- Coordinate Funding Opportunities
  - Erin Erango-Escalante worked closely with Julie and Lana on key priorities
  - Kath reported that PM is in the Race-to-the-Top application with training, coaching, and mentoring
  - Local efforts intend to apply for the ECAC/CCF opportunity to Invest Early related to the PM.

## Next Steps

- Identify funding opportunities based on the revised three year implementation budget
  - Partnership with UW Population health on NIH grant?
  - Other?
- Continue to build political will in support of YS efforts
  - Support and respond to DCF and other state level interest in the Pyramid Model
  - Work with data group to share results from TPOT pre and post and create one page with talking points, data available end of November 2012
  - Share expulsion pre and post and create one page with talking points—data collection for post is just beginning b/c of training timelines initial data available end of March 2013
- Work with training support group/information sharing on ongoing communication efforts
  - Testimonials
  - Evaluation results

## State team members updates



## State Benchmarks of Quality

- [..\BoQ\WI NEW State BoQs.xlsx](#)

## Setting our priorities:

- Leadership team
- Coordination
- Funding
- Communication Visibility
- Administrator Support
- Demonstration Programs
- Family Involvement
- Professional Development
- Ongoing Support & TA
- Evaluation

## Pyramid Model state leadership team meetings in 2013

Every 4<sup>th</sup> Monday every 4 months from 11-2 PM

- January 28<sup>th</sup>
- April 29<sup>th</sup>
- July 29<sup>th</sup>
- October 28<sup>th</sup>

**Thank you and see you soon!**

Do not forget to like WI Pyramid Model on Facebook!

Please

