

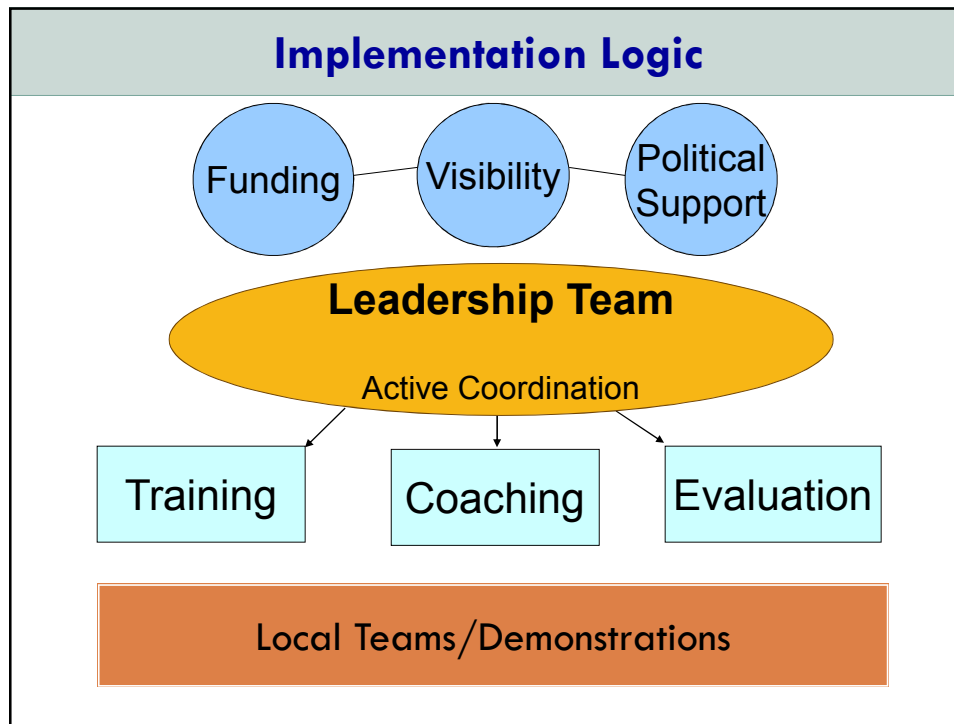
WI PYRAMID MODEL FOR SOCIAL AND EMOTIONAL COMPETENCE

STATE LEADERSHIP TEAM MEETING

January 28, 2013

Today:

- Introductions/Greetings
- Updates from the coordinators
- Review 2013 priorities and action plan
- Workgroup updates
- Pyramid Model structure and current funding
- State team members updates
- Expanding program-wide implementation
- Staying connected & meeting evaluation



Updates:

- Meeting with Eloise Anderson & her staff
- Pyramid Model Learning Roundtable
 - National – Dr. Mary Louise Hemmeter
 - State – WI PM coordinators
 - Local
 - A child's place, Kenosha
 - Next Door Foundation, Milwaukee
 - ThedaCare, Appleton
 - DCPC, Inc., Madison
- Follow up- Secretary Anderson's invitation
- Race to the top & the Pyramid Model

Learning Roundtable Highlights



A Child's Place: Teachers Love the Pyramid Model

The Pyramid Model Changes Adults and Children.

Time Out is ancient history. Its easier to deal with
frustration levels and challenging children.

I have more patience.

I have learned to slow down and it helps me teach
children how to calm down.

(It works with my teens at home too!)



Mary Beth Taylor

"Little Learners" Room Lead Teacher

A Child's Place:



Administrators Love the Pyramid Model

The Pyramid Model Builds a Great Relationship Between Facts and Feelings.

We have proof that the training we provide to teachers and parents about the Pyramid Model for Social Emotional Foundations in Early Learning has improved the classroom environment, relationship with children and families and reduced challenging behaviors.

Benchmarks of Quality (program)
TPOT and TPITOS scores (teacher)
ASQ-SE scores (child)

Scores indicate consistent progress and program fidelity.

ThedaCare: Stories from Teachers

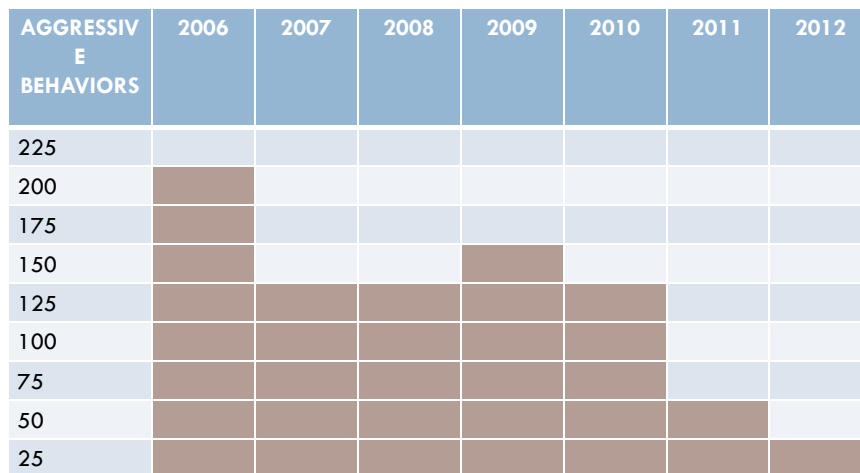
- ▣ “By implementing the Pyramid Model center-wide, and having things consistent for children, there are much fewer behavioral issues.”
- ▣ “The Pyramid Model helps children understand the rules, plan better for the children and helps the children feel safer.”
- ▣ “As a teacher, I have learned to focus on emotional literacy, understanding why a child may react in certain ways, and how to help the child learn the skills they need.”

ThedaCare: Comments from Families who participated in the Parenting Modules:

- “I felt empowered by having a framework for teaching my children, and walked away with additional tools that I could continue to build on.”
- “Having the class spread out over several weeks was nice so that we could try the techniques and get feedback or ask questions after trying them.”
- “It was good to know that we aren’t alone out there with different situations you run into as parents.”

ThedaCare: Behavior Issues Decrease (Hitting, scratching, pinching, biting, etc.)

ThedaCare became Pyramid Model program-wide site in 2010



Visibility

- <http://www.facebook.com/WiPyramidModel?ref=h>



- Total Likes **108 (21.35% increase)**
- Friends of Fans **26,421**
- Weekly Total Reach **448 (277% increase)**

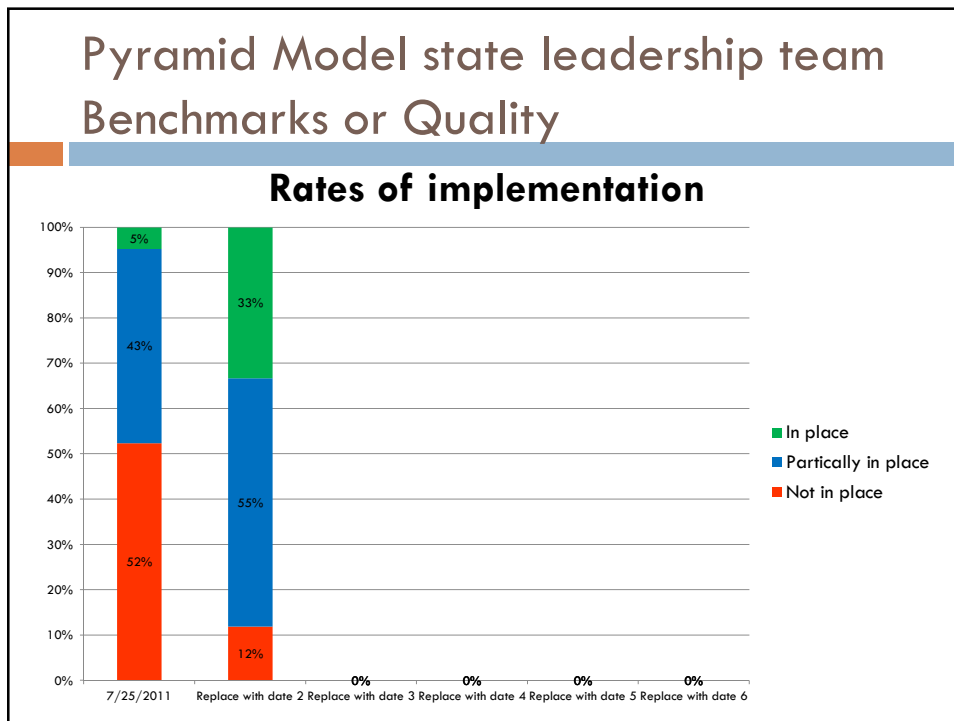
Please help us spread the word! Like our page! It is a way to stay connected!

Link to our facebook page from the Collaborating Partners Pyramid Model page:

- <http://www.collaboratingpartners.com/social-emotional-competence-sefel-pyramid.php>

Visibility

- Pyramid Model on the Collaborating Partners
 - State team updates
 - Secure information for the implementation sites
- Google Analytics:
 - October 1st- December 31st, 2013
 - 2,148 page views
 - 1,487 unique page views (increased by 226 unique views since September 2012)



2013 priorities and action plan

- Leadership team
- Coordination
- Funding
- Communication Visibility
- Administrator Support
- Demonstration Programs
- Family Involvement
- Professional Development
- Ongoing Support & TA
- Evaluation

Workgroups Updates

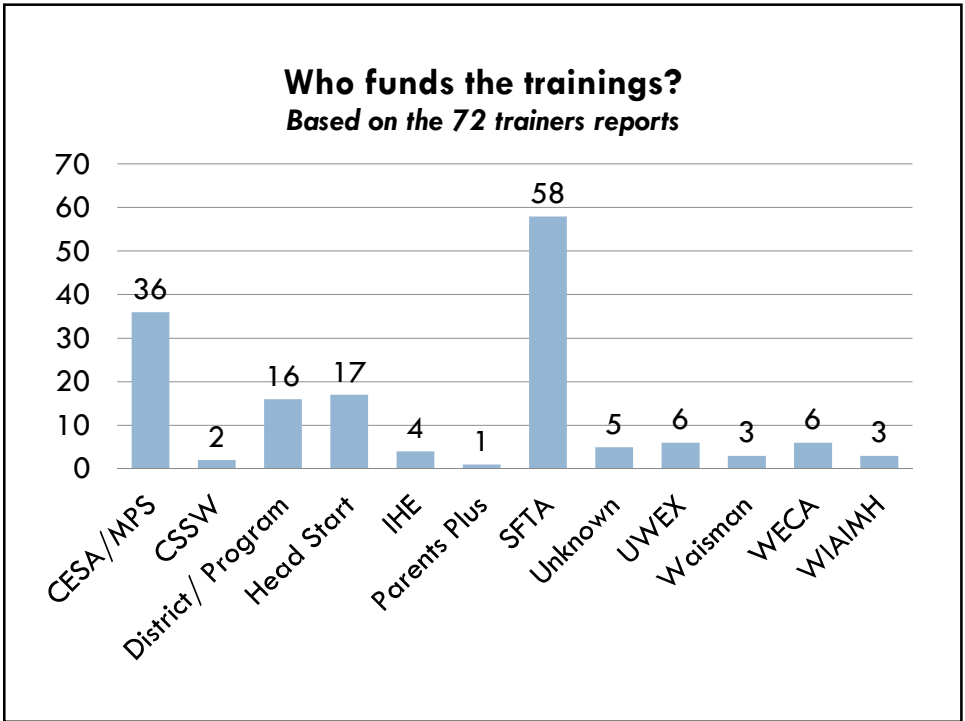
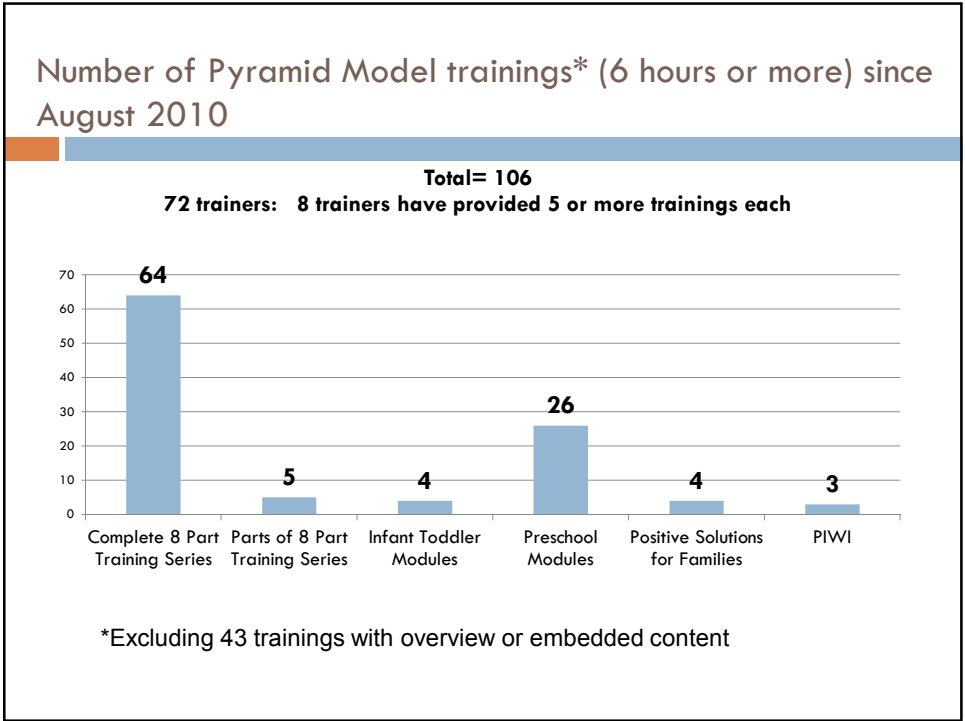
- Training Support – Julie
- Parenting Modules – Staci
- Information Sharing – Andrea
- Data- Julie and Lana
- Infrastructure – Lana

PYRAMID MODEL TRAINING WORKGROUP UPDATE

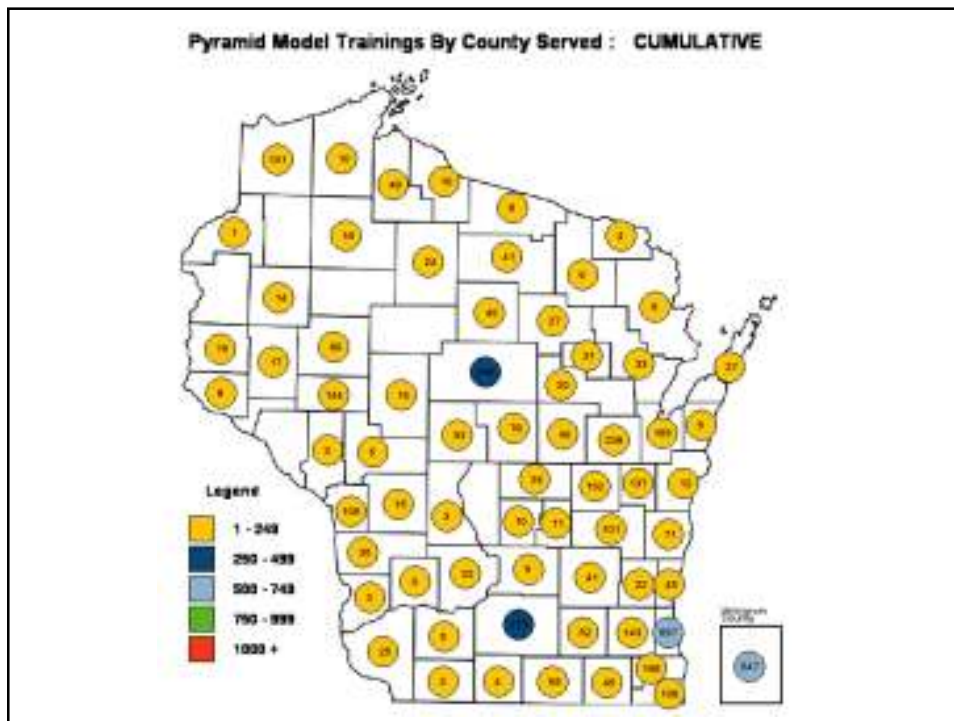
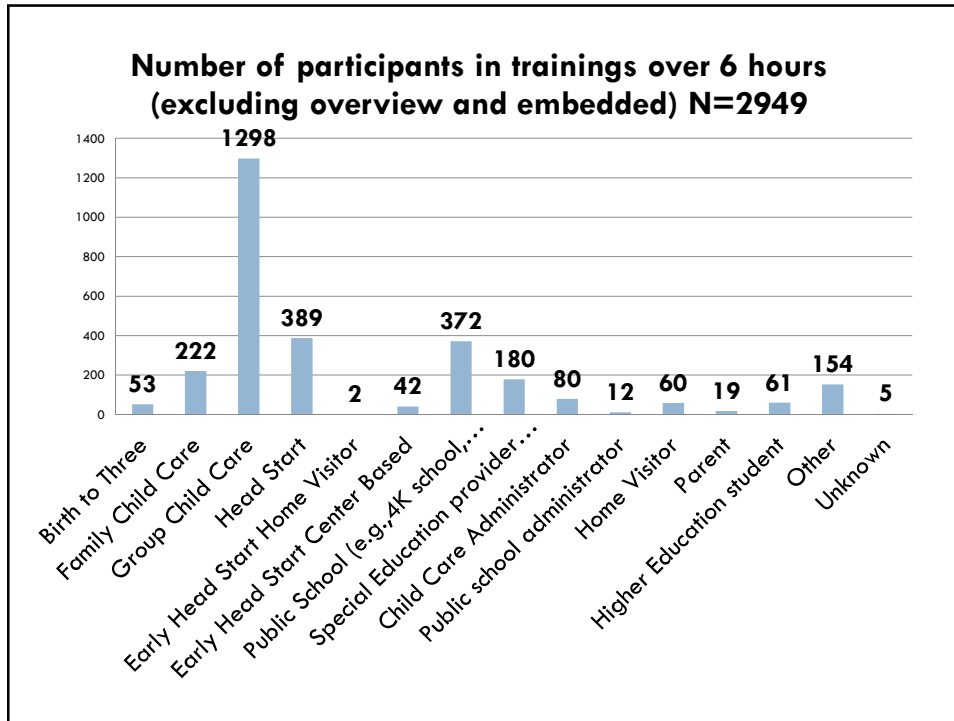
Since October 2012

- 13 more trainings were completed
 - 10 Full 8 Part training series
 - One partial 8 Part (21 hours)
 - Two part day overviews (Family Forum)

Promoting Social & Emotional Competence in
Infants and Young Children



Promoting Social & Emotional Competence in Infants and Young Children



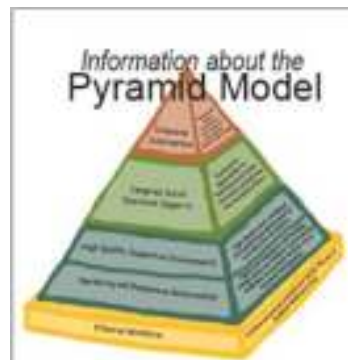
Counties without reported trainings

	# of regulated programs (total number of regulated programs in the state = 6,295)	Number of school districts	Head Start programs
Taylor	18	3	Yes
Adams	13	1	Yes
Buffalo	19	4	Yes
Pepin	19	2	Yes
Polk	40	8	Yes
Rusk	25	4	Yes
Washburn	26	4	Yes

INFORMATION SHARING
WORKGROUP

- [Meeting update](#)
- Marketing plan
- [Newsletter opportunities](#)
- [Conference opportunities](#)

Promote information about the Pyramid
Model page- Pyramid Model button



Don't forget our facebook page



- Barb Evensen
- Kath McGurk
- Julie Walter
- Lana Nenide

- Staci Sontoski
- Linda Tuchman
- Julie Betchkal
- Jill Hoiting

SUSTAINABILITY/INFRASTRUCTURE UPDATE

Current Structure and Funding

You/your agency/your fundee Activity/Deliverable related to state implementation of the Pyramid Model	Responsible Person /Lead Agency	Budgeted Amount

State team members updates



INNOVATION
SUCCESS
EVALUATION
DEVELOPMENT
GROWTH
SOLUTION
PROGRESS
MARKETING

Expanding program-wide implementation : Timeline		
What	When	Who
Review and edit the application and rating rubric	February 18 th 2013	LN
Distribute applications (collaborating partners, target programs that participated in 8 part series, consider inviting programs that were not ready in 2010/2011/2012)	March 1 st , 2013	LN and team
Application deadline	April 1 st , 2013	
Individual review	April, 2013	
Team meeting to determine candidates	April- doodle will be sent to the team to determine the meeting date	team
Implementation Academy logistics:	April	LN & JB
<ul style="list-style-type: none"> • Determine Date! • Confirm and reserve location 		Angie
Notify –applicants (provide detailed feedback)	May 1 st , 2013	LN
Create registration materials for the Academy		Angie/LN/JB
Registration for the Implementation Academy open	June 1 st , 2013	Angie
Implementation Academy agenda, content, Materials, etc...	June-July	JB/LN
Implementation Academy	August 12 th —15 th	JB/LN

Expanding program-wide implementation

- Application
- Application review committee

Pyramid Model state leadership team meetings in 2013

- April 29th 11 AM- 2 PM
- July 29th 11 AM – 2 PM
- October 28th 11 AM- 3 PM – state BoQ assessment

Thank you and see you soon!

